

Psychopathic Behavior Portrayed in Accident Man (2018) Movie: A Psychoanalytic Approach

Naufal Abyan Ellyas^{1*}, Syahara Dina Amalia, M.Ed.²

¹ Faculty of Education, Universitas Muhammadiyah Surakarta, Surakarta, Indonesia.

² Faculty of Education, Universitas Muhammadiyah Surakarta, Surakarta, Indonesia.

Corresponding authors: naufalabyan26@gmail.com, sda263@ums.ac.id

Abstract

This study aims to find the psychopathic behavior portrayed in the movie Accident Man (2018) based on Hare's (2012) twenty types of psychopathic trait also known as PCL-R and the effect of the behavior on the main character life using psychoanalytic approach. This study used qualitative research employing document analysis method. The results of this study reveals seven psychopathic traits done by the main character of the movie, which are superficial charm, lack of remorse, lack of realistic long-term goals, impulsivity, lack of empathy, poor behavioral controls, and criminal versatility. The effect of the psychopathic behavior to the main character life is devastating. It made him to be despised by everyone and made him lose his job even though based on Hare's (2012) PCL-R, the main character cannot be classified as a psychopath because they did not meet the requirements to be categorized as a psychopath. Although he cannot be considered as a psychopath, the seven traits that are revealed in this study suggest that his behavior is always closely related to violence. This study can be used by other researchers who want to study psychopathic behavior further in various literary works and any emerging movie or novel writer that seeks to create a psychopath character by using this study as a reference.

Keywords: accident man, movie , psychoanalytic, psychopathic behavior

Introduction

Literature is "any printed or written material that is useful, carrying information, and is considered to be beneficial or valuable for human beings" (Wellek, 1949). Wellek Rene (1949) adds that literature can be classified into two categories, which is fiction and poetry. By definition, fiction means the type of literature encompassing works of imaginative chronicle, especially in text or inscribed form. This encompasses vast amounts of literature such as novels, short stories, or movies. Movie is a type of literature that displays its content through video and audio. Movies can be analyzed using many different approaches, like sociology, marxism, or psychoanalysis. Freud (1954) said that the foremost objective of a psychoanalytic research is to analyze the relationship of conscious and unconscious elements in the mind of the research subject that affects the subject mental health. Psychoanalysis itself has been widely used as a research approach, such as in the study done by Alfajr and Candraningrum (2020) and Utomo and Thoyibi (2018). In the study done by Alfajr and Candraningrum (2020) psychoanalysis was used to find the human nature from a character in The Devil And Miss Prym novel, whereas in the study done by Utomo and Thoyibi (2018) psychoanalysis is used to find the reason of the aggressive behavior done by the main character in Crooked House novel.

One of the things that affects the subject 's mental health is mental illness. Mental illness, or mental disorder is any illness with substantial psychological or behavioral appearances that is related with either a painful or distressing indication or a weakening in one or more vital areas of operative (Gibbons, 1999). Typically, it causes distress or hinders one's ability to function effectively in key aspects of life. According to Werkhoven (2021) there are many forms of mental disorders in psychology, such as schizophrenia, depression, and psychopathy.

Psychopathic behavior means to be engaged in activities commonly associated with individuals that have psychopathy. It is important to not classify an individual as a psychopath based on isolated instances of psychopathic behavior. Accurate categorization of a psychopath can be done through a thorough examination of the individual's inherent traits and behavioral patterns. The application of the psychopath label to an individual needs careful consideration and comprehensive analysis of their overall conduct.

Psychopath is a person that has a mental illness that makes them to be an aggressive, asocial, and highly impulsive person who has little or no feelings towards other human beings and is unable to have a lasting bond of affection with other human beings (William and McCords, 1964). According to Hare (2012), the psychopath level of a person can be scored from 0 to 40 using Psychopathy Checklist Trait - Revised (PCL-R). PCL-R counts the trait that a person had and compare it to the trait that a psychopath usually has such as Juvenile delinquency, impulsivity, lack of empathy, promiscuous sexual

behavior, grandiose sense of self-worth, parasitic lifestyle, criminal versatility, pathological lying, lack of realistic long-term goals, poor behavioral controls, proneness to boredom, superficial charm, irresponsibility, early behavior problems, manipulative, lack of remorse, failure to accept responsibility for own actions, many short-term relationships, revocation of conditional release, and shallow affect. In his publication, [Hare \(2003\)](#) categorized those traits into four categorizations, namely: affective, lifestyle, interpersonal and antisocial. Interpersonal category means the traits affect their behavior on communicating with others, which includes pathological lying, superficial charm, manipulative, and grandiose sense of self-worth. Affective category means the traits affect their capability on giving any affection, which includes failure to accept responsibility for own action, lack of empathy, lack of remorse, and shallow affect. Lifestyle category means the traits affect them in their daily life or lifestyle, which includes irresponsibility, lack of realistic long-term goal, impulsivity, parasitic lifestyle, and proneness to boredom. Lastly, antisocial category means that the traits affect them in their social relationship with others. This includes early behavioral problems, juvenile delinquency, poor behavioral control, criminal versatility, and revocation of conditional release. Promiscuous sexual behavior and many short-term relationships are not included into any of those categorizations. In these categorizations, interpersonal and affective categories are closely related to narcissistic personality disorder, whereas lifestyle and antisocial categories are closely related to criminality and violence. [Hare \(2012\)](#) says that a person having scored 25 or more can be considered as a psychopath. The scoring system that's used in his theory is as follows. If there is a strong alignment between the trait and the individual under examination, the score receives a two-point increase. In the case of a partial or inconclusive alignment, the score is raised by one. If it turns out that there is no alignment whatsoever, the score remains unchanged (zero score). This means that someone that does much psychopathic behavior and doing it frequently can makethem to be labeled as a psychopath.

There have been several research studies that investigate psychopathic behavior on the characters of some literary works such as in movies or novels, for instance in the studies done by [Al Janah and Amalia \(2022\)](#), [Aprilia and Candraningrum \(2018\)](#), [Rachmawati and Candraningrum \(2020\)](#) and [Pratami and Candraningrum \(2021\)](#). The result of these studies discussed the type of psychopathic behavior that is commonly found in a psychopath, and what caused it. In research done by [Aprilia and Candraningrum \(2018\)](#) the cause of psychopathy to occur can be funneled into the lack of compassion from parents.

When talking about psychopathic behavior, we cannot rule out the life experience of the subject, such as their childhood, and whether they had a good childhood times or bad childhood times like being picked at or bullied. According to [Sanders \(2004\)](#) bullying is an aggressive behavior that led to certain goals where the action can harm other individual using their difference in power. As a research topic, bullying shown in novels and films has been investigated by other researchers several times before, such as in the research done by [Lestari and Nugroho \(2020\)](#), [Afina and Candraningrum \(2021\)](#), and [Hapsari and Prastiwi \(2023\)](#). In their research, the researchers are able to find out kind of bullying that is usually done to the bullied person, such as verbal bullying and physical bullying.

One of the movies that contains a lot of psychopathic behavior and bullying is Accident Man. As stated on [imdb.com \(2018\)](#), Accident Man is a movie directed by Jesse V. Johnson. This movie was made in the United Kingdom and had two release dates, which was on 6 February 2018 (United States release) and 16 April 2018 (United Kingdom release). In the Accident Man movie, the main character, Mike Fallon, who is at the time recurrently subjected to bullying by his friends, incidentally observes a hitman in action. This discovery led Mike to learn the art of assassination from the hitman himself, named Ray. He then killed his bullies, and then, for 15 years, Mike learned from Ray to be a skilled hitman himself. After he finished his training, he started working in a hitman agency run by Ray alongside six colleagues. When Mike's ex-girlfriend was killed, he discovered that two of his colleagues were responsible and confronted them. This led to a fight and subsequent attempts on Mike's life, resulting in the death of his colleagues. Angry at Mike, Ray ordered the remaining hitmen to eliminate him. In the end, Mike eventually beat the majority of his colleagues and because of it is later exiled from the agency by Ray.

The Accident Man movie is considered a pretty decent movie, especially when compared to other similar movies of the same genre. As stated on [rottentomatoes.com \(2018\)](#), Accident Man scored 87 out of 100. A review by [Sol Harris \(2018\)](#) in Starburst Magazine website also states that Accident Man ultimately succeeds on the charms of its cast.

Based on the aforementioned reasons, the researchers are interested in investigating the psychopathic behavior on the main character's daily life with a research entitled *Psychopathic Behavior Portrayed in Accident Man (2018) Movie: A Psychoanalytic Approach* to reveal how psychopathic behavior are portrayed in the movie and the effect of the psychopathic behavior on main character's daily life.

Research Method

The type of study that is used in this research is descriptive qualitative research. According to [Creswell \(2007\)](#), qualitative research is a type of research that begins by examining assumptions, worldviews, or specific cases to understand the meaning behind the behavior of individuals or groups. Qualitative research seeks to explain these findings in terms of how they relate to society or human experiences. [Ary et al \(2019\)](#) states that qualitative research is the study of behavioral or social phenomena, for instance, human behavior. Moreover, qualitative research seeks to interpret, discover, and understand human and social behavior as it is lived by the partaker in a particular social situation.

Because of the nature of the qualitative type of study, the data of this study are manifested as sentences and words instead of numerical numbers. There are two kinds of data sources in this study, which is primary and secondary data. The primary data source of this study are gathered from the dialogues and scenes from the movie *Accident Man* (2018), while the secondary data source is gathered from articles, journals, and books related to the research.


The data collection in this research study is done by watching the movie, scrutinizing the movie script, and screenshotting the important scenes from the movie. This research used document analysis method. According to [Corbin and Strauss \(2008\)](#) the process of document analysis involves a systematic approach to examining and assessing various types of documents, encompassing both printed and electronic materials, including those transmitted through computers and the Internet. Similar to other analytical approaches in qualitative research, document analysis imposes a thorough examination and interpretation of data. This process aims to extract meaning, increase comprehension, and generate empirical knowledge from the studied documents. The data from this study is then analyzed by adopting qualitative data analysis by [Miles and Huberman \(1994\)](#), where the data were processed in three steps, mainly data reduction, data display, and conclusion drawing.

Results and Discussion

1. How Psychopathic Behavior is Portrayed in the Movie

Using PCL-R from [Hare \(2012\)](#), the researchers are able to find some traits of psychopathy from the main character that are portrayed in the movie. PCL-R is a list of trait that is usually associated with psychopathy, such as grandiose sense of self-worth, then there is lack of empathy, manipulative, superficial charm, promiscuous sexual behavior, pathological lying, poor behavioral control, another one is proneness to boredom, impulsivity, irresponsibility, other than that there is lack of remorse, and also parasitic lifestyle, lack of realistic long-term goals, early behavior problems, failure to accept responsibility for own actions, many short-term marital relationships, other than that there is juvenile delinquency, revocation of conditional release, and for the last one is criminal versatility.

Table 1. Psychopathic Behavior Done by the Main Character Based on Hare's PCL-R

No	Trait	Data	Source	Explanation
1.	Superficial charm	Image 1.1.1 	(00:50:55)	In this scene, it can be seen that Mike is trying to win over Ray by using flattery and kind words. He compliments Ray and tries to be really charming in order to convince Ray to train him as a hitman. This shows that Mike is using his superficial charm to get what he wants, which is to learn the skills of a hitman from Ray.
2.	Grandiose sense of self-worth	No data of this trait on the main character is found		

- 3. Prone to boredom No data of this trait on the main character is found
- 4. Pathological lying No data of this trait on the main character is found
- 5. Manipulative No data of this trait on the main character is found

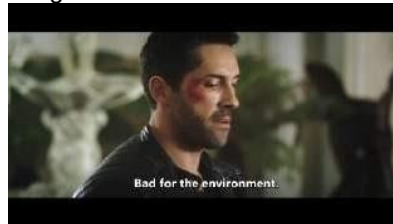
- 6. Lack of remorse

Image 1.6.1



(00:55:10) Following the act of defenestration of his bullies, Mike reveals himself as someone who appears to have no guilt or remorse. He openly states that he did not experience any guilt or remorse after the event. This suggests that he might have a lack of guilt or remorse about what he did.

Image 1.6.2



(01:33:45) In this scene, Mike is someone who does not seem to feel remorse for his actions. He demonstrates this by his behavior when he takes the life of the corporation's leader. Instead of showing any signs of guilt or remorse, he goes a step further and openly mock the dead body of the leader, showing no regret for the situation. This behavior suggests that he may have a notable absence of remorse or guilt about his actions.

- 7. Shallow affect No data of this trait on the main character is found

- 8. Lack of empathy

Image 1.8.1



(00:03:14) In this particular scene, It is evident that Mike is portrayed as an individual who appear to have a lack of empathy. This deficiency in empathy is blatantly illustrated when he takes someone's life and explicitly expresses a disregard for viewing the person as a fellow human being. Such behavior indicates a notable absence in the capacity to comprehend or share the feelings of others, highlighting a significant lack of empathy.

Dialogue 1.8.1

Victim : Don't do this. You know who I am

Mike : Yeah, I know who you are, mate. You're 25 grand.

Mike (monologue) : I don't see him as a person.

Image 1.8.2



Dialogue 1.8.2

Mike : Mac was a case of friendly fire. Mick will have to live with that.

(01:34:58) In this scene, we get a clear picture of Mike as someone who does not seem to grasp how others feel. He shows this lack of empathy when he talks about Mac, who was a victim of what Mike calls "friendly fire." Instead of expressing understanding or concern for Mac's situation, Mike seems to place the blame on Mac, stating that Mick will have to deal with the consequences while Mike himself was the one who caused the "friendly fire" incident.

9. Parasitic lifestyle

No data of this trait on the main character is found

10. Poor behavioral controls

Image 1.10.1



(00:03:53) In this particular scene, it can be seen that Mike's ability to control his actions seems to be lacking. After he takes someone's life, he does not stop there. Instead, he proceeds to physically harm others by getting into fights. This behavior suggests that Mike might struggle with managing his actions and emotions, as he does not seem to rein in his aggressive tendencies even after a serious incident like taking a life. It is a clear example of his difficulty in maintaining proper behavioral control.

11. Promiscuous sexual behavior

No data of this trait on the main character is found

12. Early behavior problems

No data of this trait on the main character is found

13. Lack of realistic long-term goals

Image 1.13.1



Dialogue 1.13.1

(00:14:20) Mike is depicted someone who lack realistic long-term goal, as evidenced by his confession that his relationship with his girlfriend is facing challenges, and he expresses no intention or plan to address and improve the situation.

Mick : So Mike, are you still dating that model chick?

Mike : On and off, mate. You know me.

14. Impulsivity

Image 1.14.1



(00:49:08) In this specific scene, Mike is described as impulsive, as he acts on his instantaneous thoughts by following the hitman in spite of the evident risk of getting caught. This portrayal highlights his tendency to make hasty and unplanned decisions.

Image1.14.2



(00:54:46) During this scene, it can be seen that Mike is struggling to make a tough choice about whether he should harm the people who have been bullying him. In the end, he decides to act without really thinking about what might happen as a result of his actions. This decision shows that he acted on impulse and did not consider the possible outcomes carefully.

15. Irresponsibility

No data of this trait on the main character is found

16. Failure to accept responsibility for own actions

No data of this trait on the main character is found

17. Many short-term relationships

No data of this trait on the main character is found

18. Juvenile delinquency

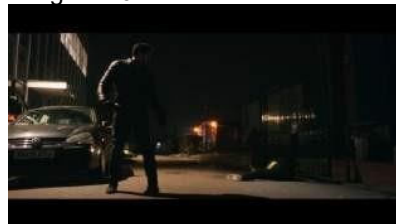
No data of this trait on the main character is found

19. Revocation of conditional release

No data of this trait on the main character is found

20. Criminal versatility

Image 1.20.1



(00:24:09) In this particular scene, Mike's actions paint a clear picture of him as someone engaging in criminal behavior. He takes the life of another person in an alley. This act of violence is a strong indicator that Mike is involved in unlawful activities, as causing harm to others in such a manner

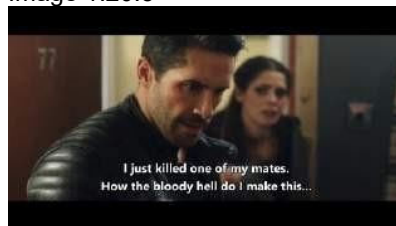
is against the law and morally unacceptable.

Image 1.20.2



(00:52:19) In this scene, Mike is seen pleading to Ray so that he trains him to be a hitman. This indicates that Mike's way of thinking is full of violence, and thus makes him willing to become a criminal such as a hitman to get what he wants.

Image 1.20.3



(01:05:34) Mike is portrayed as a criminal by killing one of his colleagues and trying to make it look like an accident. This is in line with the trait of criminal versatility in which he did not only engage in one type of criminality, but many types of crime, repeatedly.

Image 1.20.4



(01:09:17) Mike is portrayed as a criminal by torturing his other colleague by hitting his colleague's feet with a metal bat in this scene.

From [Table 1](#), the main character only shows seven traits of psychopathy, and out of those seven traits, only four occur more than once. According to the psychopathy checklist - revised (PCL-R) by [Hare \(2012\)](#), only a person who scores more than 25 points can be categorized as a psychopath. The scoring system itself is based on the matching between the behavior of the examined person with the trait list in PCL-R. If there is a strong alignment between the trait and the individual under examination, the score receives a two-point increase. In the case of a partial or inconclusive alignment, or if there is no match with the examined person, the score is raised by one. If it turns out that there is no alignment whatsoever, the score remains unchanged (zero score). Based on this, the researchers can sum up the psychopathy score of the main character.

Superficial charm, lack of realistic long-term goal, and poor behavioral control are given a score of one, as they occur only once in the movie, making them a mixed matching trait. Mike shows these traits in various instances. Superficial charm can be seen in Data 1.1.1, where Mike tries to make Ray train him to be a hitman by giving Ray flattery. Poor behavioral control can be seen in Data 1.10.1, where Mike beats up others for no apparent reason. Lack of realistic long-term goal can be seen in Data 1.13.1, where Mike states that he is currently not in a stable relationship. Mike demonstrates lack of empathy, lack of remorse, and impulsivity multiple times in the movie as seen in Data 1.6.1, 1.6.2, 1.8.1, 1.8.2, 1.14.1, and 1.14.2. In addition, the trait of psychopathy shown by Mike the most in the movie is criminal versatility, which happens four times, as seen in Data 1.20.1, 1.20.2, 1.20.3, and 1.20.4. In these instances, Mike engages in many kinds of criminal activity, such as a public street fight in Data 1.20.1, intent to learn to be a hitman in Data 1.20.2, killing his own colleague in Data 1.20.3, and torturing others in Data 1.20.4.

Compared to a research done by [Al Janah and Amalia \(2022\)](#) on "Ted's Psychopathy Problem in Extremely Wicked Shockingly Evil and Vile Movie," the outcome of this research displays a discrepancy. The main character in the movie is considered a psychopath by confirming the existence of twelve out of twenty of the psychopathy trait checklist made by

[Hare \(1992\)](#). Those psychopathic traits found in the main character are: charming, cannot stand bored, liar, arrogant, proud about harmful behavior, cannot control his behavior, erratic sexual behavior, lack of guilt, have a parasitic lifestyle, having early behavior problem, is incapable of feeling love, and cannot be held accountable for failures.

Based on all the information gathered, the researchers can figure out that the main character, Mike Fallon, has a psychopathy score of 11 out of a possible 40. This score tells us that Mike Fallon has some psychopathic traits, but it is not very high. It helps us understand his psychological makeup in the story. [Hare \(2012\)](#) states that only a person that scores more than 25 can be categorized as a psychopath, which means that Mike Fallon, the main character of the movie Accident Man, is not a psychopath. Furthermore, based on Hare's four categories of psychopathic behavior, the traits that are related to lifestyle and antisocial categories often lead to criminality and impulsive violence. Since four of the psychopathic traits that are found on Mike fall on these two categories, researchers conclude that Mike is violent, but not a psychopath. Compared to what [William and McCords \(1964\)](#) define about a psychopath, Mike's character indeed shows aggressiveness and highly impulsive behavior, however, he can still have normal social relationship with his colleagues, especially before his ex-girlfriend was assassinated.

2. The Effect of the Psychopathic Behavior on Main Character's Daily Life

After gathering the data, the researchers able to discover what psychopathic behavior do to the main character's daily life. The data gathered is presented in the table below.

Table 2. The Effect of the Psychopathic Behavior on Main Character's Daily Life

No	Data	Source	Explanation
1	Dialogue 2.1.1 Ray : <i>I have made a really difficult decision tonight. You all have a new mark. Mike Fallon.</i>	(01:13:21 - 01:13:32)	After Ray finds out that Mike kills one of his own colleague, Ray ordered all hitmen in his company to kill Mike as a form of retaliation.
2	Dialogue 2.1.2 Mike : <i>Ready for your flight Mr. Kent?</i> Kent : <i>No! Zim. Zim! Zim! Atal Zim. He's a senior executive at the... at the pancock corporation! I'll tell you everything!</i>	(01:19:47 - 01:19:55)	Because of his psychopathic behavior, in this case is criminal versatility by torturing, Mike is able to make Kent, an accountant, to give him a secret information to him. This implied that Mike is can and will to do something that is a crime and violent to get anything that he wants. In the later stages of the movies, it is described that everyone disapproves with his method of gathering information.
3	Dialogue 2.1.3 Mike : <i>I'm sorry, Ray</i> Ray : <i>Yeah, well.....it's a bit late for sorry.</i> Ray : <i>Now, if you don't mind.....get the fuck out of my pub.</i>	(01:39:51 - 01:40:09)	After Mike kills most of his colleagues, Mike is banished from the company that he was working on. Ray, who previously want Mike to be dead, now did not want to deal anything to do with him.

From [table 2](#), the researchers conclude that after doing many instances of psychopathic behavior, the life of Mike Fallon, the central character in the Accident Man movie, undergoes a series of substantial and lasting transformations. Firstly, as seen in Data 2.1.1, by killing one of his colleagues, he made Ray, his boss, to order every other hitmen on his company to kill him. Secondly, by torturing others as seen in Data 2.1.2, he became disliked by others that still views him as a good person before, thus worsening his public image. Finally, in Data 2.1.3, after killing most of his colleagues, it made Ray, his boss, to give up on killing Mike and banish him from his company, and want nothing to do with Mike anymore. It is clear that every action performed by Mike is full of violence at all times, and this conduct of his might be

misinterpreted as an indication of someone with a psychopathic tendency. Despite the categorization of twenty types of psychopathic traits proposed by Hare (2012) prove that Mike is not a psychopath, his tendency to solve every problem using violence makes everyone around him to despise him. Because of it, in the end of the movie, Mike Fallon did not have an occupation, and is an unemployed person. This has essentially devastated his life, rendering him incapable of collaborating with other professionals in Ray's company who share his line of work. Moreover, since the proficiency in taking someone's life is not a widely recognized or valued skill in the job market, the researchers assumed that Mike Fallon's future remains shrouded in uncertainty.

Conclusion

From the data that have been collected, the researchers concluded that there are seven kinds of psychopathic behavior formulated by Hare (2012) that are showed by the main character of the Accident Man movie, which are impulsivity, lack of remorse, lack of empathy, poor behavioral control, lack of realistic long-term goal, superficial charm and criminal versatility. Although looks like one, based on the psychopathy checklist proposed by Hare (2012), Mike is not a psychopath, because his psychopathy score is too low to be one. Instead, Mike is considered as a violent person since most of the psychopathic traits that he has shown thorough the movie belong to the lifestyle and antisocial categories. The effect of his psychopathic behavior in the movie is devastating for Mike's life in a way that whatever he does must involve violence, which leads him to lose his job, his colleagues, hated by everyone that knows him, and now is an unemployed and is assumed to be having difficulties in finding a job based on his skillset.

References

- Accident Man - Rotten Tomatoes. (2018, February 6). Wwww.rottentomatoes.com. https://www.rottentomatoes.com/m/accident_man
- Afina, & Candraningrum D. (2021, August 1). *An Analysis of Bullying Faced by August Pullman in Wonder Movie (2017): A Psychoanalytic Approach*. Eprints.ums.ac.id. <https://eprints.ums.ac.id/93315/>
- Al Janah, S., & Amalia S.D. (2022, January 15). *Investigating Ted's Psychopathy Problem In "Extremely Wicked Shockingly Evil and Vile" From Freud's Psychoanalytic Perspective*. Eprints.ums.ac.id. <https://eprints.ums.ac.id/96584/>
- Alfajr, M. A., & Candraningrum D. (2020). *Human Nature In The Main Character Of Paulo Coelho's The Devil And Miss Prym Novel (2000): A Psychoanalytic Approach*. Eprints.ums.ac.id. <https://eprints.ums.ac.id/82684/>
- Aprilia, A., & Candraningrum D. (2018). *Psychopath Reflected In Robert Galbraith's The Cuckoos Calling (2013): Psychoanalytic Approach*. Eprints.ums.ac.id. <https://eprints.ums.ac.id/60455/>
- Ary, D., Jacobs L.C., Walker, D. A., & K, C. (2019). *Introduction to research in education*. Cengage.
- Corbin, J., & Strauss, A. (2008). *Basics of Qualitative Research (3rd ed.): Techniques and Procedures for Developing Grounded Theory*. SAGE Publications. <https://doi.org/10.4135/9781452230153>
- Creswell. (2007). *Qualitative inquiry and research design: Choosing among five approaches, 2nd ed*. Psycnet.apa.org. <https://psycnet.apa.org/record/2006-13099-000>
- Definition of fiction | Dictionary.com*. (2019). Wwww.dictionary.com. <https://www.dictionary.com/browse/fiction>
- Freud, S. (1954). *The origins of psycho-analysis: letters to Wilhelm Fliess, drafts and notes, 1887-1902*. Edited by Marie Bonaparte, Anna Freud [and] Ernst Kris; authorized translation by Eric Mosbacher and James Strachey. Introd. by Ernst Kris. In *The Open Library* ([1st English ed.]). Imago. https://openlibrary.org/books/OL18236625M/The_origins_of_psycho-analysis
- Freud, S. (2015). *The Origin and Development of Psychoanalysis*.
- Hapsari, D. R., & Prastiwi Y. (2023). *Taking A Risk To Get A Freedom's Life In Everything, Everything (2015) By Nicola Yoon: An Individual Psychological Approach*. Eprints.ums.ac.id. <https://eprints.ums.ac.id/107368/>
- Hare, R. D. (2012). Hare Psychopathy Checklist-Revised. *PsycTESTS Dataset*. <https://doi.org/10.1037/t04993-000>
- Hare, R. D., Forth, A., & Kosson, D. (2003). Hare Psychopathy Checklist: Youth Version. Psycnet.apa.org. <https://psycnet.apa.org/doiLanding?doi=10.1037%2Ft04992-000>
- Harris, S. (2018). ACCIDENT MAN. STARBURST Magazine. <https://www.starburstmagazine.com/reviews/accident-man/>

- Hart, S. D., Hare, R. D., & Harpur, T. J. (1992). The Psychopathy Checklist—Revised (PCL-R). *Advances in Psychological Assessment*, 8, 103–130. https://doi.org/10.1007/978-1-4757-9101-3_4
- Johnson, J. V., Adkins, S., Mills, P., Small, S., Adkins, S., Stevenson, R., & Paymer, D. (2018, February 6). *Accident Man*. IMDb. <https://www.imdb.com/title/tt6237612/>
- Juwitaningrum, I. M., & Thoyibi M. (2021). *Bullying in Schools and Its Impacts on the Mental Health of the Victim Reflected in Susin Nielsen's The Reluctant Journal (2012): A Psychological Perspective*. Eprints.ums.ac.id. <https://eprints.ums.ac.id/91398/>
- L. Gibbons, J. (1999). *Mental disorder - Borderline, Symptoms, Treatment* | Britannica. Www.britannica.com. <https://www.britannica.com/science/mental-disorder/Borderline-personality-disorder>
- Lestari, D., & Nugroho A. (2020). *Bullying In Wonder Novel : A Psychosocial Perspective*. Eprints.ums.ac.id. <https://eprints.ums.ac.id/86984/>
- McCord, W., & McCord, J. (1964). *The psychopath: An essay on the criminal mind*.
- Miles, M. B., & Huberman, A. M. (1994). *Qualitative data analysis: An expanded sourcebook, 2nd ed*. Psycnet.apa.org. <https://psycnet.apa.org/record/1995-97407-000>
- Pratami, R. P., & Candraningrum D. (2021, January 1). *Katherine' Psychopathy in Lady Macbeth (2016): A Psychoanalytic Approach*. Eprints.ums.ac.id. <https://eprints.ums.ac.id/88597/>
- Rahcmawati, R., & Candraningrum D. (2020, November 19). *Psychopath and The Role of Grief of Losing in The Lovely Bones Novel by Alice Sebold (2002) a Psychoanalytic Study*. Eprints.ums.ac.id. <https://eprints.ums.ac.id/87561/>
- Sanders, C. E. (2004). *Bullying: Implications for the classroom*. Psycnet.apa.org. <https://psycnet.apa.org/record/2004-16484-000>
- Utomo, Y. P., & Thoyibi M. (2018, February 1). *Aggressive Behavior Reflected in Agatha Christie's Crooked House Novel (1949): A Psychoanalytic Approach*. Eprints.ums.ac.id. <https://eprints.ums.ac.id/59167/>
- Wellek, R., & Warren, A. (2019). *Theory of literature*. Nova.
- Werkhoven, S. (2021). Natural kinds of mental disorder. *Synthese*. <https://doi.org/10.1007/s11229-021-03239-9>