

## DESIGN OPTIMISATION OF OUTER HOOD PANEL OF ESEMKA R2 CAR TO IMPROVE PEDESTRIAN PROTECTION

Binyamin<sup>1</sup>, Tri Widodo Besar Riyadi<sup>2</sup>,

<sup>1,2</sup>Postgraduate Program of Mechanical Engineering, Universitas Muhammadiyah Surakarta  
Jl. A. Yani Tromol Pos 1 Pabelan, Kartasura, Surakarta 57102, Indonesia

Email: [Tri.Riyadi@ums.ac.id](mailto:Tri.Riyadi@ums.ac.id)

### ABSTRACT

*Traffic accidents are terrible scourge that occur in many countries, specially for developing countries where transportation affairs like tangled yarn. Besides functioning as an engine compartment cover, the hood of modern compact SUV can also help to manage the impact energy of a pedestrian's head in a vehicle-pedestrian impact. This paper presents outer hood design of Esemka R2 that has a potential to improve hood's ability and also to absorb the impact energy of a pedestrian's head. The developed method for the design of an outer hood configuration aims to provide a robust design and homogeneous of Head Injury Criterion (HIC) for impact position at WAD 1000 and three different thicknesses (1.25 mm, 1.35 mm & 1.50 mm) of outer hood panel of Esemka R2 compact SUV, taking into consideration the limited space available for deformation. The non-linear Finite Element Analysis (FEA) software (Explicit Dynamics) was used in this research to simulate the testing procedurs of head impact for child pedestrian. The results show that the average of comparison dimensional of outer hood panel of Esemka R2 was 4.89 mm. The minimum of deformation space meet the requirement for HIC value which required obtaining robust and homogeneous head impact performance. Outer hood thickness and materials were identified as the factors to influence the stress and HIC value of the hood. By comparing all outer hood panels, aluminium alloy as the best selected material which has the lowest value is 32.78% for the pedestrian protection.*

**Keywords:** Head impact; HIC; outer hood panel; FEA; pedestrian protection.

### ABSTRAKSI

Kecelakaan lalu lintas adalah momok yang mengerikan yang terjadi di banyak negara, khusus untuk negara-negara berkembang di mana urusan transportasi seperti benang kusut. Selain berfungsi sebagai penutup kompartemen mesin, kap SUV kompak yang modern juga dapat membantu untuk mengelola energi dampak kepala pejalan kaki di dampak kendaraan-pejalan kaki. makalah ini menyajikan desain kap luar Esemka R2 yang memiliki potensi untuk meningkatkan kemampuan hood dan juga untuk menyerap energi benturan kepala pejalan kaki ini. Metode yang dikembangkan untuk desain konfigurasi hood luar bertujuan untuk memberikan desain yang kuat dan homogen *Head Injury Criterion* (HIC) untuk posisi di WAD 1000 dan tiga ketebalan yang berbeda (1,25 mm, 1,35 mm & 1,50 mm) dari panel kap luar Esemka R2 kompak SUV, dengan mempertimbangkan ruang terbatas yang tersedia untuk deformasi. *Software Non-linear Analisis Elemen Hingga* (Dynamics Explicit) yang digunakan dalam penelitian ini untuk mensimulasikan prosedur dasar pengujian impact kepala untuk pejalan kaki anak. Hasil penelitian menunjukkan bahwa rata-rata perbandingan dimensi panel kap luar Esemka R2 adalah 4,89 mm. Minimum ruang deformasi memenuhi persyaratan dengan nilai HIC yang homogen serta mendapatkan kinerja impact kepala yang aman. ketebalan hood luar dan bahan diidentifikasi sebagai faktor yang mempengaruhi stres dan nilai HIC pada kap. Dengan membandingkan semua panel kap luar, paduan aluminium sebagai bahan yang dipilih terbaik yang memiliki nilai persentase terendah adalah 32,78% untuk perlindungan pejalan kaki.

**Kata Kunci:** HIC; panel kap luar; FEA; keamanan pejalan kaki.

**INTRODUCTION**

The latest data released by the World Health Organization (WHO) showed that India ranks first country with the highest number of deaths caused by traffic accidents, while Indonesia was reported to have an increase in the number of traffic accidents by more than 80 percents, where the death toll from traffic accidents reached 120 people per day (Marbun, 2014). In those days, the belief was that the only way to reduce pedestrian fatalities and injuries was to prevent pedestrian– vehicle collisions. Several previous researchers (Ahmed & Wei, 2016; Huang, Liu, & Long, 2014; Masoumi, Hassan, & Najibi, 2011; Min, Kim, Chae, & Hong, 2016; Samaka & Tarlochan, 2013) proposed improvements of hood panel based on pedestrian head protection which hood designs and materials created in finite element model. Explicit dynamics of FEM have proved to be useful for sheet metal simulation (Anggono, Riyadi, & Siswanto, 2014). Consideration of modification of vehicle design for pedestrian protection was not an option at that time. From this sequence of events, it can be stated that typically the colliding vehicle runs under the pedestrian and the severity of injuries vastly depend on the vehicle shape and certain characteristics such as energy absorption. In the Australian New Car Assessment Program (ANCAP), the pedestrian tests are carried out to estimate head and leg injuries to pedestrians struck by a vehicle at 40 km/h or (approx. 11.1 m/s) (Krishnamoorthy, Takla, Subic, & Scott, 2013).

**Literature Review and Theory**

However, the mechanism of injury is complex. The Head Injury Criterion (HIC) indicates a measure of the likelihood of head injury arising from an impact, which is evaluated by the impactor in terms of the simulation of child head. HIC includes the effects of head acceleration and the duration of the acceleration (Masoumi et al., 2011). The impacts of standard child headform on nine different designs have been simulated in this study. ANSYS, an explicit finite element code was used to simulate the impacts. At first, the development and validation of numerical child headform impactors based on ANCAP standards are discussed. Subsequently this impactor was used for head to hood impact analysis. The research aims to comparison of outer hood design of Esemka R2 between photo and using manual Coordinate Measuring Machine, in addition, an implicit finite element code was developed to perform analysis for comparing the deformation, equivalent stress and HIC of three different materials.

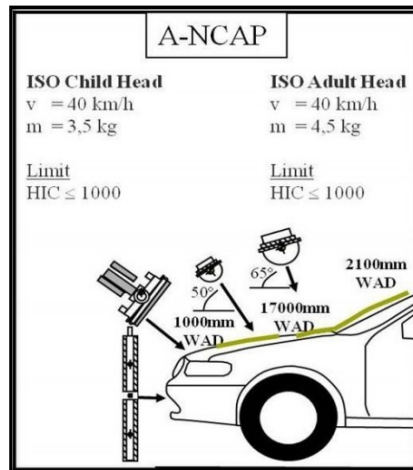


Figure 1. Standards of ANCAP pedestrian protection head impact requirements (Krishnamoorthy et al., 2013)

ANCAP (Figure1.) provides measures for the assessment of pedestrian protection performance of a passenger car experimentally by firing subsystem impactors representing a child head, adult head, upper leg and lower leg at a specified angle and speed to the front end of a stationary vehicle. The resulting injury measures from these physical tests are assessed against the bounds specified by the protocols shown in Figure 1. This study focuses only on child pedestrian head impact to the outer hood panel and do not include inner hood, upper or lower leg impacts defined in these protocols.

As a result of the implementation of these regulations, vehicle manufacturers face technical challenges associated with the investigation of optimal hood panel configuration to meet the requirements of ANCAP while retaining or maximising styling flexibility with minimal modifications to the general architecture of the design. HIC criteria are used to predict the risk of engine hood to the pedestrian of collision and the level of severity of engine hood design when the collision occurs (Cruz, PM; Vinyals, J., 2004). The value of HIC depends on the engine hood design,

materials, impactor type and structure. HIC is calculated according to equation (Shojaeefard, Najibi, & Ahmadabadi, 2014):

$$HIC = \left[ \frac{1}{t_2 - t_1} \int_{t_1}^{t_2} a \right] (t_2 - t_1) \tag{1}$$

$a$  is the resultant acceleration in  $g$   $t_1$ ,  
 $t_2$  is two time instants in seconds

which define the start and end of the recording when HIC is at maximum. Values of HIC in the time interval  $t_1-t_2$  is greater than 15 ms are ignored for the purpose of calculating the maximum value. In this study, HIC value is calculated using DIAdem for the pedestrian head impact on automotive hoods.

**Impact**

According to Beer, et al. (2010) an impact is collision between two bodies which occurs in a very small interval of time and during which the two bodies exert relatively large forces on each other. The common normal to the surfaces in contact during the impact is called the *line of impact*. If the mass centres on the two colliding bodies are located on this line, the impact is a *central impact*. Otherwise, the impact is said to be eccentric. Our present study will be limited to the central impact of two particles (see Figure 2).

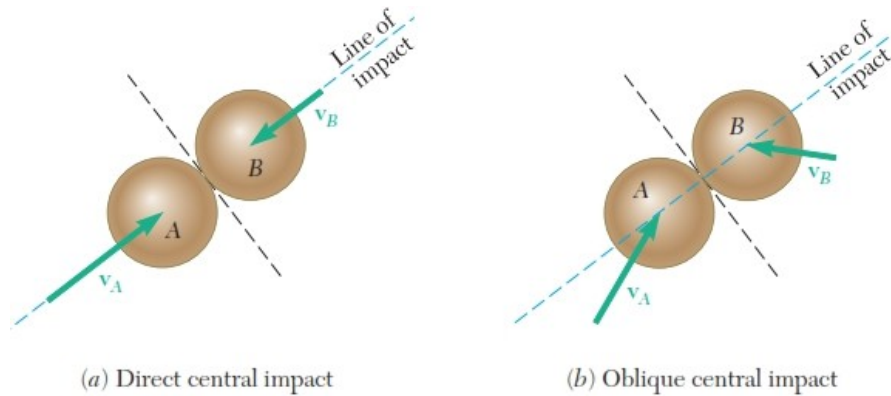


Figure 2 Central Impact of Particles (Beer, et al., 2010)

**METHODOLOGY**

**Research Flowchart**

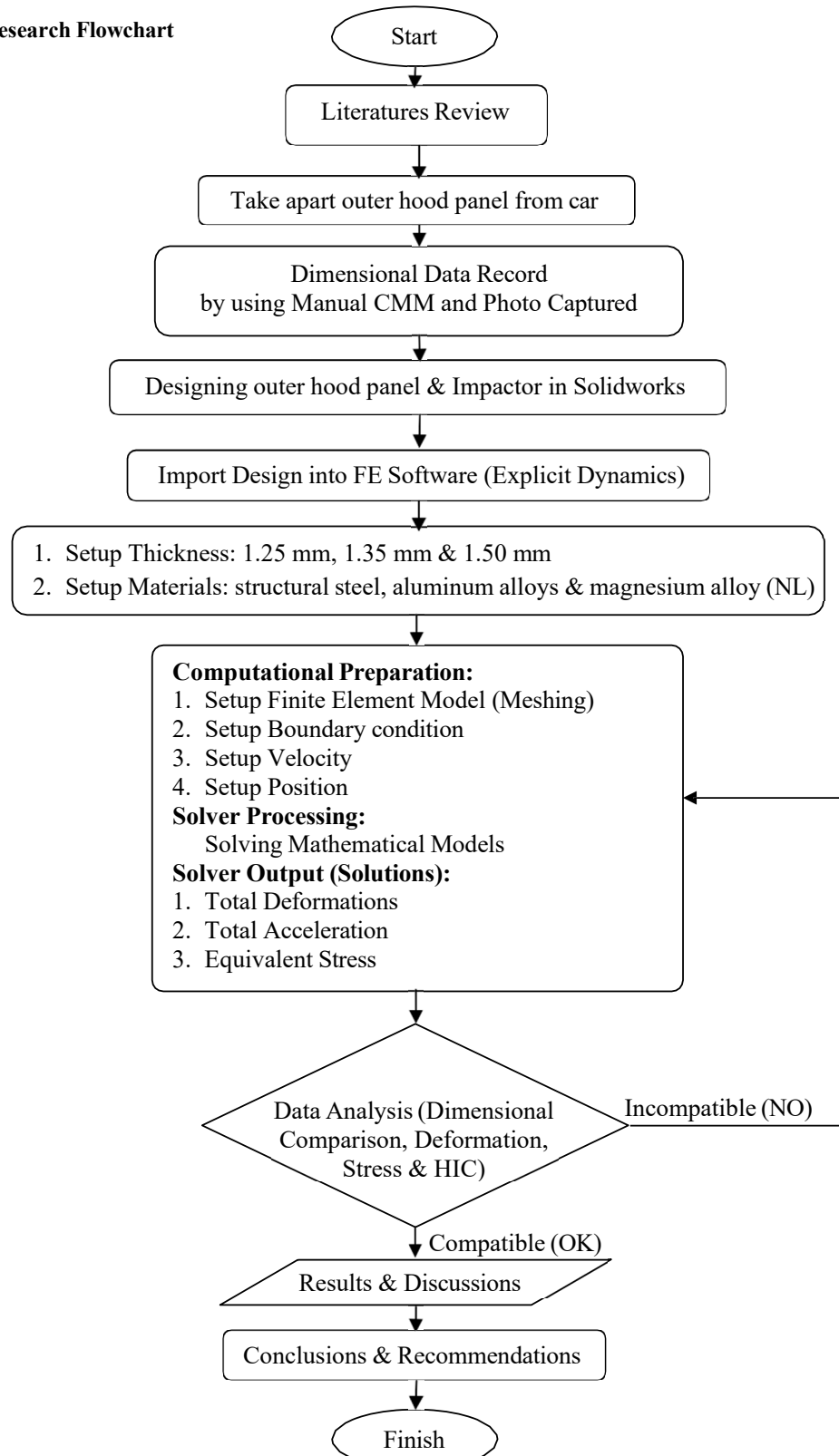
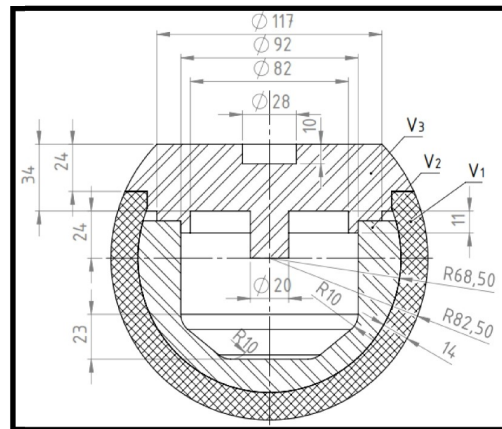


Figure 3. Research Flowchart

**Details and properties of Child Headform**

The child headform made from aluminum alloy and polyethylene, which is a homogenous construction in a spherical shape. The sphere covered with  $14\pm 0.5$  mm thick synthetic skin (polyethylene). The outer skin indicated by  $V_1$ , the inner aluminum part  $V_2$  and the cover plate  $V_3$  (see Figure 4). From Figure 4., the diameter of the cylinder on which the accelerometers were positioned was 20 mm, and its height was 24 mm; the diameter of the hole on cover plate was 28 mm, and its depth was 10 mm; the thickness of the outer synthetic skin was 14 mm; the radius of the whole headform was 82.5 mm, and radius of the inner aluminum sphere was 68.5 mm. The outer skin was made of polyethylene (PE) with density  $930 \text{ kg/m}^3$  (see Table 1). The inner part and the cover plate were made of aluminum with a density of  $2770 \text{ kg/m}^3$  (see Table 2).

Figure 4. Detail of child headform impactor



The inner part and cover plate of child headform were aluminum alloy, which is extremely stiff compared to its polyethylene skin. Numerical model of child headform was created in Solidworks 2014 and considered as a rigid body element as shown in Figure 5.

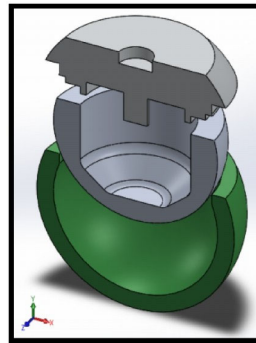


Figure 5. Numerical model of child headform

It can be seen that Table 1 and Table 2 show the detail of material properties used for designing childhead impactor which mainly consist of aluminum alloy and polyethylene.

Table 1. Properties of headform material (outer skin)

Property	Value	Property	Value
Shear modulus	379.4 MPa	Density	930 $\text{kg/m}^3$
Bulk Modulus	1983.7 MPa	Specific Heat	2300 $\text{J/kg}\cdot^\circ\text{C}$
Young's Modulus	1070 MPa	Foam thickness	14 mm
Poisson's ratio	0.4101		

Table 2. Properties of headform material (inner aluminum and cover plate)

Property	Value	Property	Value
Shear modulus	26.7 GPa	Density	2770 kg/m <sup>3</sup>
Bulk Modulus	69.6 GPa	Specific Heat	875 J/kg.°C
Young's Modulus	71 GPa		
Poisson's ratio	0.33		

The detail properties of structural steel, aluminum alloy and magnesium alloy (non linear) were created by FEM software/Explicit Dynamics as shown in Table 3. Structural Steel properties of the upper structure are approximated using the information prescribed by the manufacturer's company. Density, Poisson coefficient and Young modulus of the steel are 7850 kg/m<sup>3</sup>, 0.3 and 166.7 GPa, respectively.

Table 3. Properties of outer hood panel

Material	Property	Value	Property	Value
<b>Structural Steel</b>	Shear modulus	76.9 GPa	Density	7850 kg/m <sup>3</sup>
	Bulk Modulus	166.7 GPa	Specific Heat	434
	J/kg.°C Young's Modulus	200 GPa		
	Poisson's ratio	0.3		
<b>Aluminum Alloy</b>	Shear modulus	26.7 GPa	Density	2770 kg/m <sup>3</sup>
	Bulk Modulus	69.6 GPa	Specific Heat	875 J/kg.°C
	Young's Modulus	71 GPa		
	Poisson's ratio	0.33		
<b>Magnesium Alloy (NL)</b>	Shear modulus	16.7 GPa	Density	1800 kg/m <sup>3</sup>
	Bulk Modulus	50 GPa	Specific Heat	1024 J/kg.°C
	Young's Modulus	45 GPa	Yield Strength	193 MPa
	Poisson's ratio	0.35	Tangent Modulus	920 MPa

Design optimization was used to create a matrix using the variables specified in Table 4. This matrix was utilised to create a range of alternative outer hood designs by varying the values of the selected design parameters. The variables considered in this study are summarised in Table 1. Tolerances otherwise known as noise factors, that might have some influence on the resulting HIC value and deformation of outer hood panels, have not been considered in this optimisation study for simplicity.

Table 4. Variables considered in design optimization

Variable	Value/Number of Variable	Type of Variable
Outer hood gauge	1.25 mm, 1.35 mm and 1.50 mm	Continuous
Materials selection	3	Discrete

**Analysis of Pedestrian Protection Property**

According to the requirements of the Australian New Car Assessment Program (ANCAP) for pedestrian protection, it needs to define zones of car hood for analysis, as shown in Figure 6. It can be noted that when the collision projection point locates between (Wrap Around Distance) WAD 1000 and WAD 1500, the head type will use the children head type. The adult head type will be used while the collision projection point locates between WAD 1700 and WAD 2100. In the current study, the collision projection point located at WAD 1000 when the children head type will be used.

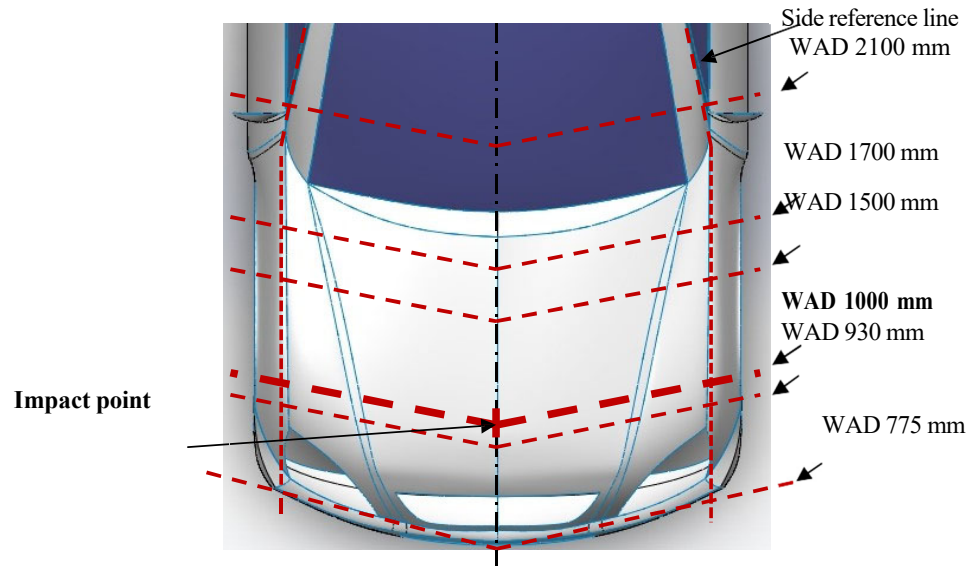


Figure 6. Zoning of pedestrian head impact protection for ANCAP

**Finite Element Modeling**

The identification of relevant optimisation parameters, the methodology used to create three dimensional geometric models and FE models, as well as the development of optimisation methodology are presented in this paper such as child headform impactor model, equivalent stress models, deformation models and headform acceleration models. The finite element model of head impactor (see Figure 7) should be validated before utilizing.

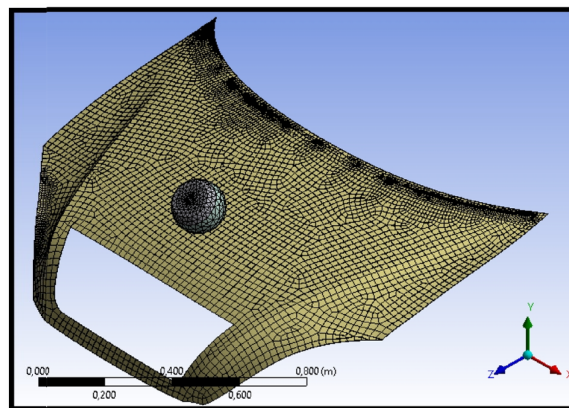


Figure 7. Finite element models of outer hood panel with child headform

All of the layers were discretized using the S4R elements (4-node general-purpose shell, reduced integration with hourglass control, finite membrane strains). The numbers of nodes and elements

used in different outer hood thickness for details are shown in Table 5. The headform part is described as a solid shape in ANSYS/Dynamics Explicit, where the number of the elements was 16623. Due to the poor of aspect ratio of these elements, a reasonably finest mesh was required to ensure convergence. Finite element models of the outer engine hood (see Table 5) was created by ANSYS/Dynamics Explicit were simulated with S4R shell element. The number of elements for outer hood panel (1.25 mm, 1.35 mm and 1.50 mm) were 5370, 5347 and 6373 respectively.

Table 5. The number of nodes and elements used in the modeling of child headform and outer hood parts

Parts	Number of nodes	Number of elements
Inner headform	2411	10825
Cover plate	1144	4971
Skin (PE)	293	827
Outer hood panel (1.25 mm)	5506	5370
Outer hood panel (1.35 mm)	5501	5347
Outer hood panel (1.50 mm)	6519	6373

**Boundary Condition (BC)**

Having the headform models been ready, the simulation of the test process was conducted. Due to nonlinearity of the material behavior and the contact between surfaces, convergence analysis carried out. Consequently, adaptive mesh generation and the changes of contact property were needed. A child headform impactor is acceptable when at any point of its surface, the peak value of acceleration is located within acceptable boundary. Boundary condition of the outer hood and headform in three areas: headform velocity, headform fixing and hood edges fixing as shown in

Figure 8. The headform impactors were impacted with the outer hood panel at previously mentioned velocity and direction, which are conducted through predefined field in ANSYS/Dynamics Explicit. For impact position at WAD 1000 from front grounded (see Figure 5).

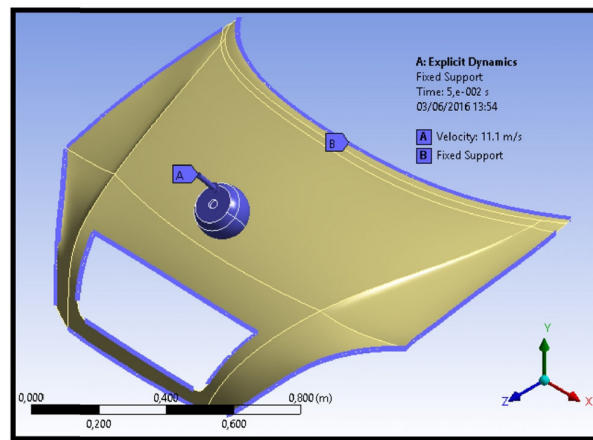


Figure 8. Boundary condition of outer hood panel and child headform

**RESULTS AND DISCUSSION**

According to dimensional data recorded and photos, there were less different dimensions and designs. It can be clearly seen that at Figure 9 there are significant differences of length and width of outer hood panels. Where outer hood design which got from dimensional data recorded had more accurate dimensions than from photo captured.

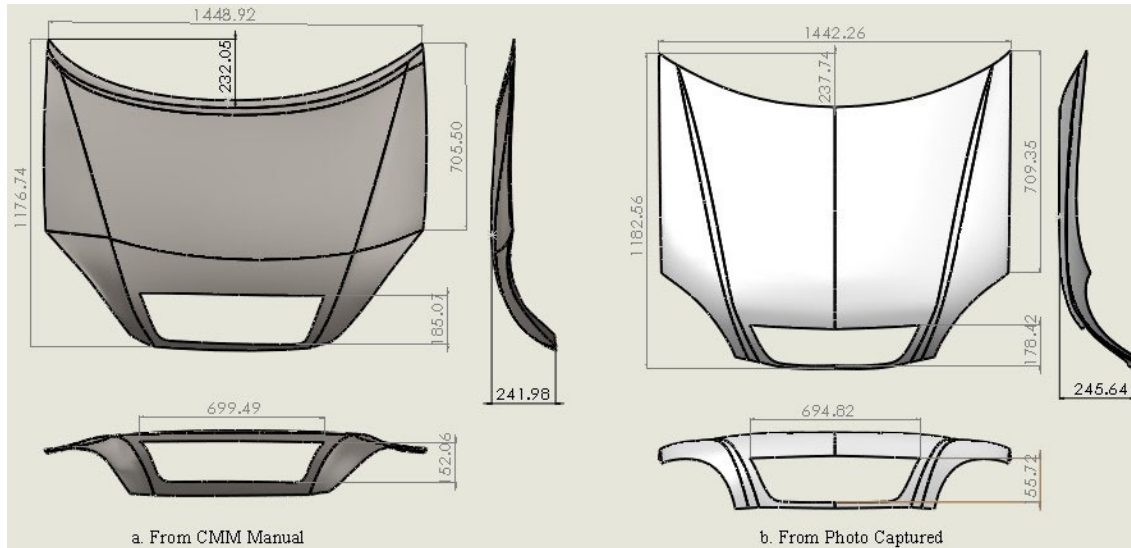


Figure 9. Design Comparison of Outer Hood Panel of Esemka R2

From Figure 9 (a,b), it can be seen that slightly dimensional difference between length of outer hood panel from CMM manual and photo captured was 6.66 mm (1448.92 – 1442.26) mm. Besides that, width difference was 5.82 (1176.74 – 1182.56) mm, height difference was 3.66 mm (241.98 – 245.64) mm. In addition, width of radiator frame ventilation difference was 4.67 mm (699.49 – 694.82) mm and height difference was 3.66 mm (152.06 – 155.72) mm. Moreover, from all dimensionals comparison are presented in Table 6.

Table 6. Dimensional Comparison of Outer Hood Panel of Esemka R2

Sections	Manual CMM (mm)	Photo Captured (mm)	Differences (mm)
length of outer hood panel	1448.92	1442.26	6.66
width of outer hood panel	1176.74	1182.56	5.82
height of outer hood panel	241.98	245.64	3.66
width of radiator frame ventilation	699.49	694.82	4.67
height of radiator frame ventilation	152.06	155.72	3.66
<b>Average</b>	<b>743.84</b>	<b>744.20</b>	<b>4.89</b>

It has been observed that the average dimension of outer hood panel of Esemka R2 has 743.84 mm from manual CMM recorded was lower than photo captured which has 744.20 mm. In addition, the average dimensional difference between CMM manual and photo captured was 4.89 mm. It was indicated that dimensional which recorded by manual CMM was more accurate than photo captured.

**Deformation of Outer ood Panel H**

In this section, pedestrian head impact simulations were investigated using three selected materials, which consist of three difference thicknesses. The effect of plate thickness on the deformation, equivalent stress, and Head Injury Criterion value were investigated. The deformation pattern of outer hood panel for

aluminum alloy (1.25 mm) are shown in Figure 10. The deformation occurred in the child headform impact area (WAD 1000) starting from  $t = 5.0003E-004$  to  $1.5E-002$  sec. The result show that the panel thickness has a significant role on the deformation value. The value of displacement varied according to material properties and thickness that can be identified by the occurrence of the deformation in the outer hood panel after the impact.

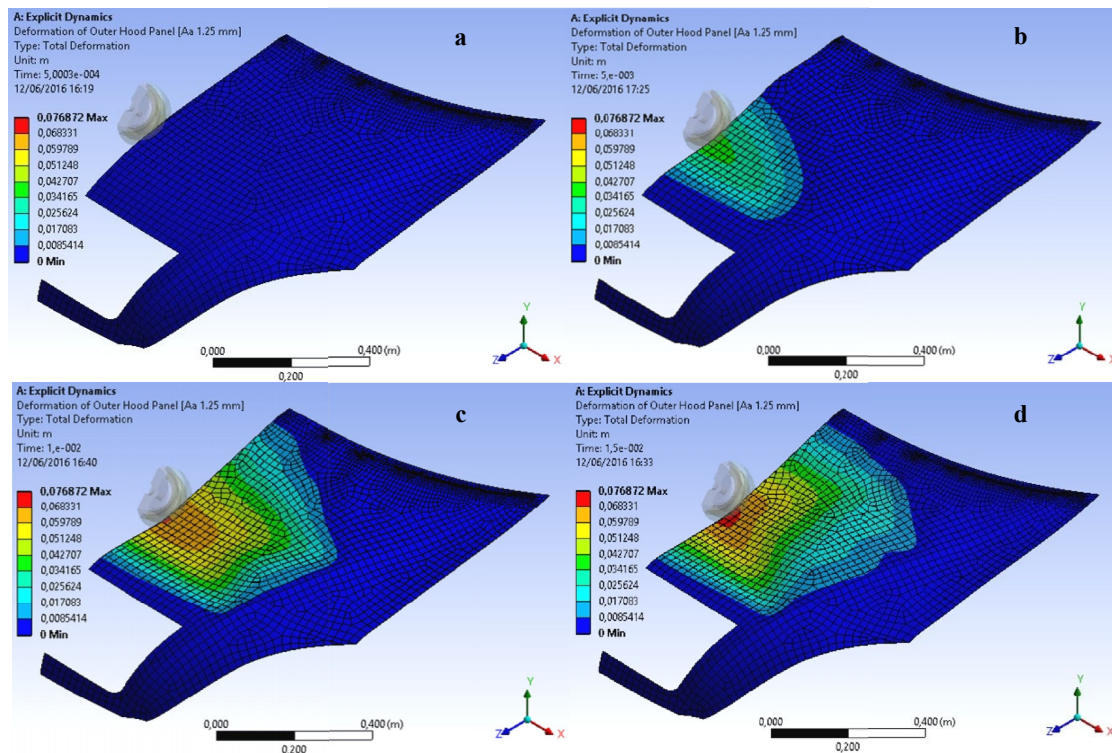


Figure 10. Deformation attern of outer hood panel of aluminum alloy (1.25 mm) at different time in FE models

It can be observed that magnesium alloy (NL) (1.25 mm) stacking squence shows the highest deformation among all the models (Figure 9). However, the HIC value achieved the lowest. In this case, the design of the engine hood according to this finite element model roposes to use soft material, especially in th engine hood structure to avoid or mitigate the impact injury of the head. Among all the models, the deformation should not be significant to maintain the style of the engine hood after the collision. When the structure absorbs greater energy and then leads to decrease the acceleration of the headform and consequently the HIC value decreases. Otherwise, greater deformation is not recommended for the engine hood in this case because this will increase the acceleration when the head be in contact with the rigid bodies of the vehicl . It can be seen that from Figure 9 the highest maximum deformation at 85.6 mm was belong to magnesium alloy (NL) (1.25 mm). It mean that, this material properties has lowest density and highest ductility from all, therefore it can absorb more impact energy which occuring at collision and can be minimized HIC value. Otherwise, from Figure 11 the lowest maximum deformation at 51.5 mm was belong to structural steel (1.50 mm). For more result of other maximum deformations can be seen in Table 7. It mean that, this material properties has highest density and lowest ductility from all, so it can not absorb more impact energy which occuring at collision and can produce highest HIC value (more see Figure 14).

Moreover, this research in line with Masoumi (2011) reported aluminum bonnet has more displacement than steel. This means that aluminum has better crashworthiness regarding to its light weight. In addition from other researchers, Ahmed and Wei (2016) had investigated composite laminate and sanwich stucture materials for engine hood found that composite laminate  $[0/90, \pm 45]_2$  had higher deformation but lower HIC than sandwich structure  $[[0/90, \pm 45]_2 0/90, \text{Core}, [0/90]_4]$  were 219.3 mm, 354, 84.7 mm and 820 respectively.

Although the intense of collision is crucial, but the displacement of head is also important which may lead to extreme acceleration in the second impact, or rebound. It means that this structure not only must be strengthened in front of static and dynamic forces such as aerodynamic, slam and dent, it also should be able to reduce the intense of impact and avoid extra deformation of hood.

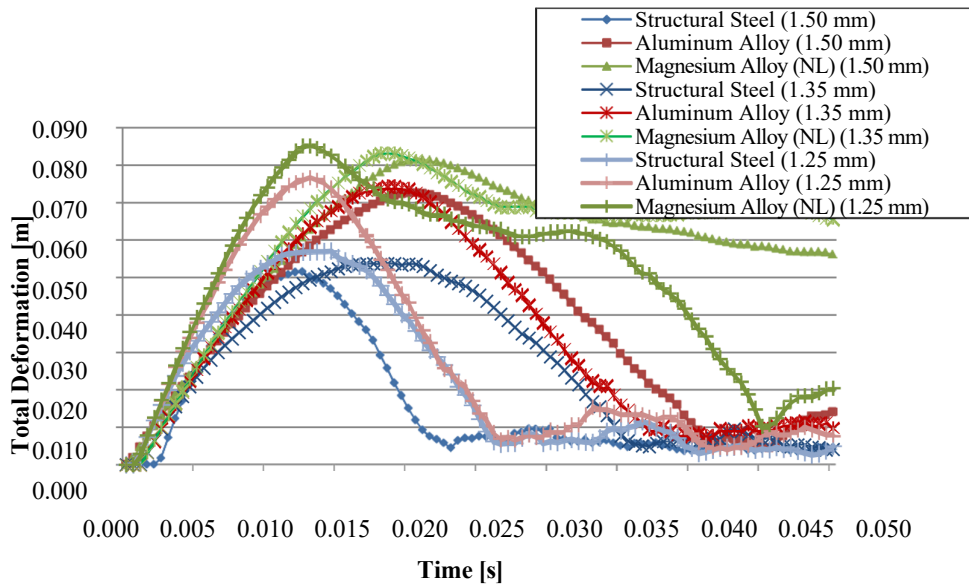


Figure 11. Comparison of outer hood panel deformation vs. time of three difference materials with 1.25 mm, 1.35 mm and 1.50 mm thicknesses

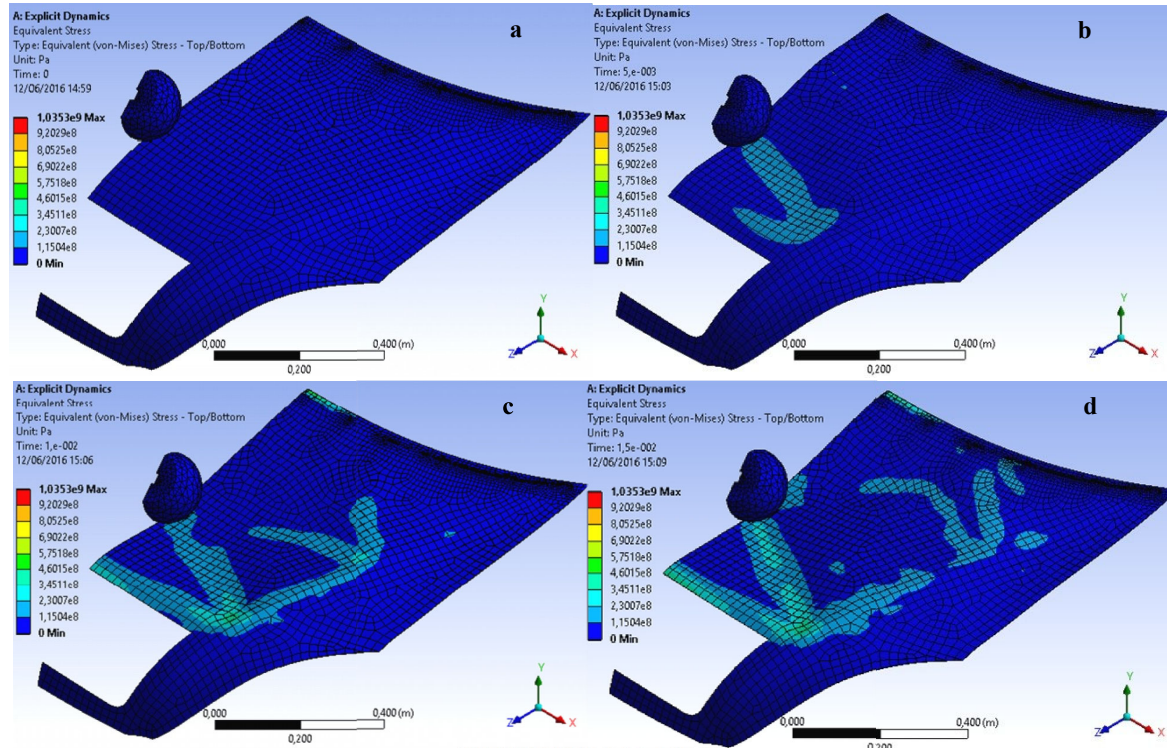
The deformation was observed, however, greater displacement is not recommended due to more modifications are needed for the hood structure and materials properties. In addition, soft structure and new composite materials are required to reduce the head injury at collision. Accordingly, the design of rigid bodies which located under hood is recommended to be at an acceptable distance to maintain the style of the engine hood and control the deformation at collision.

Table 7. The maximum deformation of outer hood panels in the collision with childheadform impactor.

Materials	Hood Thickness		
	1.25 mm	1.35 mm	1.50 mm
Structural Steel	<b>57.1 mm</b>	<b>53.8 mm</b>	<b>51.5 mm</b>
Aluminum Alloy	<b>76.9 mm</b>	<b>74.6 mm</b>	<b>72.6 mm</b>
Magnesium Alloy (NL)	<b>85.6 mm</b>	<b>83.6 mm</b>	<b>81.6 mm</b>

**Equivalent (Von-Mises) Stress**

Engine hood design can not only consider the pedestrian protection performance but also robustness. Some photos of the stress distribution of aluminum alloy (1.25 mm) can be seen at Figure 12 (a), (b), (c) and (d) which were occurring in the headform impact area starting from  $t = 0$  to 0.015 sec. The value of stress varied according to the design structure (materials and thickness) and impact propagation which occur in the outer hood panel.



An effective thickness of the outer hood panel and hood reinforcement for each hood structure is recommended to obtain a high level of pedestrian protection. Beside that, the strength of hood is needed to minimize head touching on rigid vehicle components while collision occurring.

From Figure 13, It can be seen that the highest maximum stress of structural steel (1.25 mm) is 1.95E+09 Pa at 0.013 sec. Meanwhile, for the lowest maximum stress of magnesium alloy (1.25 mm) is 2.07E+08 Pa at 0.026 sec. Aluminum alloy has a medium maximum stress is very recommended for main hood material in order to minimize head injury and lighter than hood structure form structural steel.

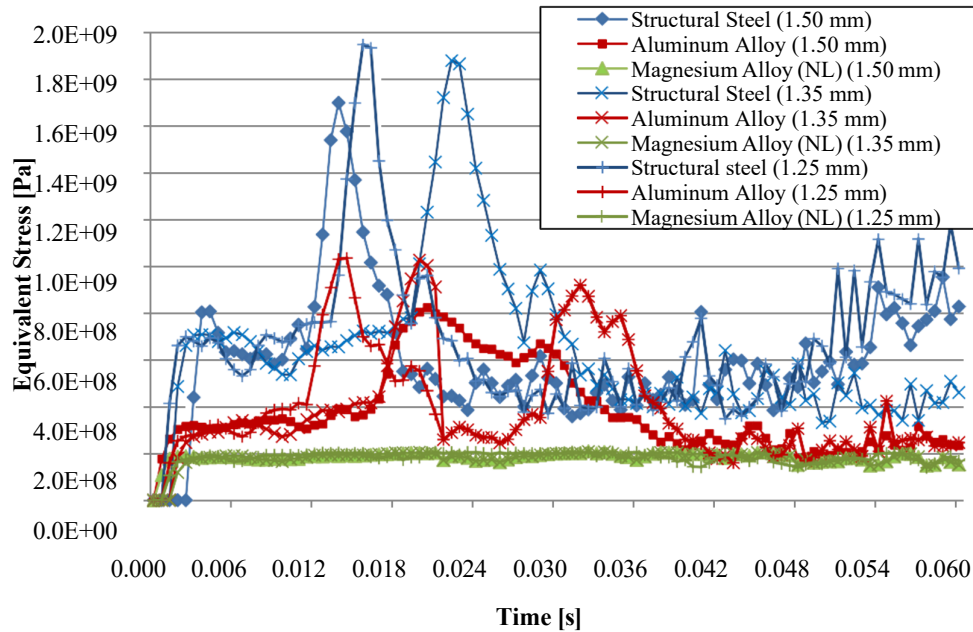


Figure 13. Comparison of equivalent stress vs. time of three difference materials with 1.25 mm, 1.35 mm and 1.50 mm thicknesses

For more number of maximum stress can be seen at Table 8. It is mean that the material properties of structural steel (1.25 mm) has the best strength from all. Otherwise, more harder material of outer hood panel can increase the number of HIC values. Masoumi et al. (2011) had investigated comparison between engine hood made of composite material, steel and aluminium in terms of material cost, manufacturing cost, maximum displacement, HIC values and weight. They found that the composite materials have higher material and manufacturing costs than steel and aluminum and maximum displacement, lower HIC, and weightier than aluminum and steel.

Table 8. The maximum stress of outer hood panels in the collision with child headform impactor.

Materials	Hood Thickness		
	1.25 mm	1.35 mm	1.50 mm
Structural Steel	<b>1.95E+09 Pa</b>	<b>1.88E+09 Pa</b>	<b>1.70E+09 Pa</b>
Aluminum Alloy	<b>1.04E+09 Pa</b>	<b>1.03E+09 Pa</b>	<b>8.23E+08 Pa</b>
Magnesium Alloy (NL)	<b>2.07E+08 Pa</b>	<b>2.09E+08 Pa</b>	<b>2.09E+08 Pa</b>

**Headform Acceleration**

Actually when a vehicle is prepared to perform the pedestrian headform test in view of pedestrian safety, the effects of all components are taken into account and the HIC values in the specific points thoroughly showing the ability of vehicle for pedestrian safety and head impact. When a simplified finite element model is performed as a simulation model for evaluating the real world, HIC values alone cannot be enough for evaluation; therefore, HIC values and displacement of headform simultaneously should be considered. As, the maximum distance between hood and the engine compartment parts could be considered less than 70 mm; therefore, displacements more than 70 mm means an extreme HIC value; however, the displacement between 50 and 70 mm is considered as a critical zone, too. The HIC values were obtained by using DIAdem programming code as shown in Figure 15.

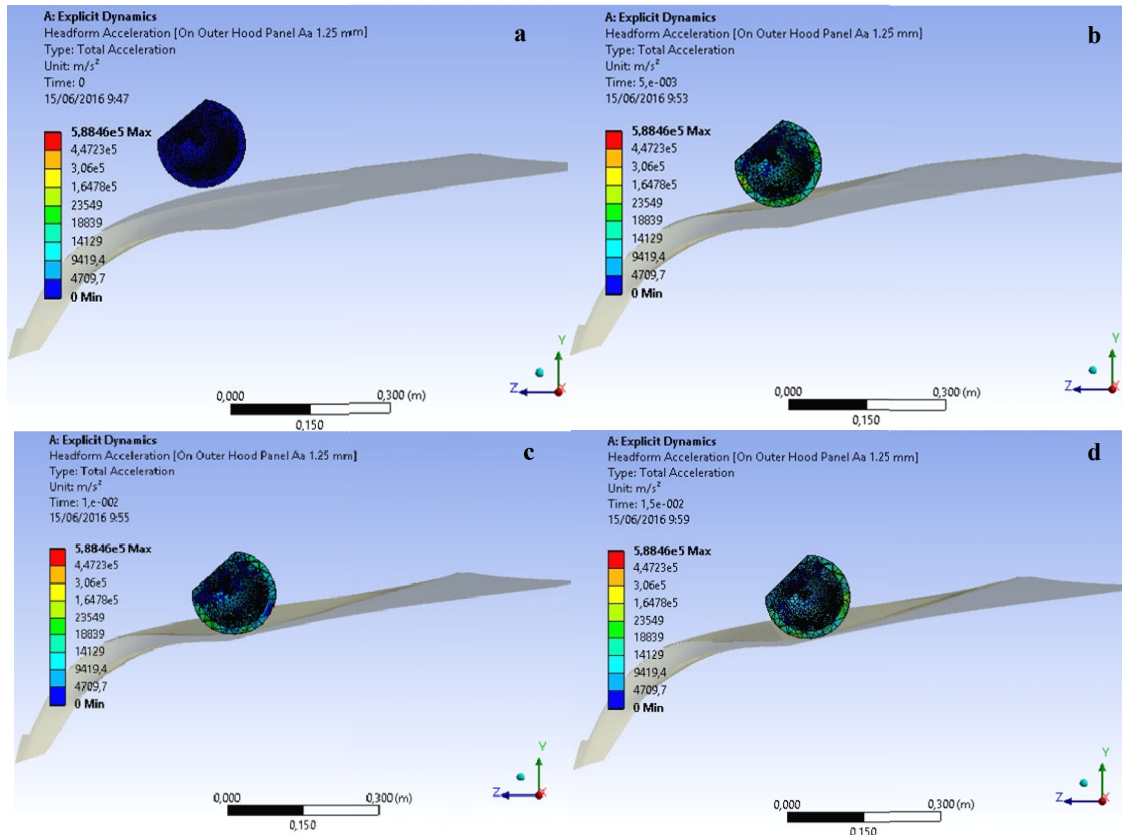


Figure 14. Headform acceleration on outer hood panel of aluminum alloy (1.25 mm) in FE model at different time

The value of headform acceleration varied according to impact duration which can be seen in Figure 14. The headform acceleration distribution on outer hood panel for aluminum alloy (1.25 mm) which was occurring when the headform touched the hood from  $t = 0$  to 0.015 sec are presented in Figure 14 (a), (b), (c) and (d). The comparison among the outer hood panel thickness and materials were carried out in terms of deformation, equivalent stress and HIC value.

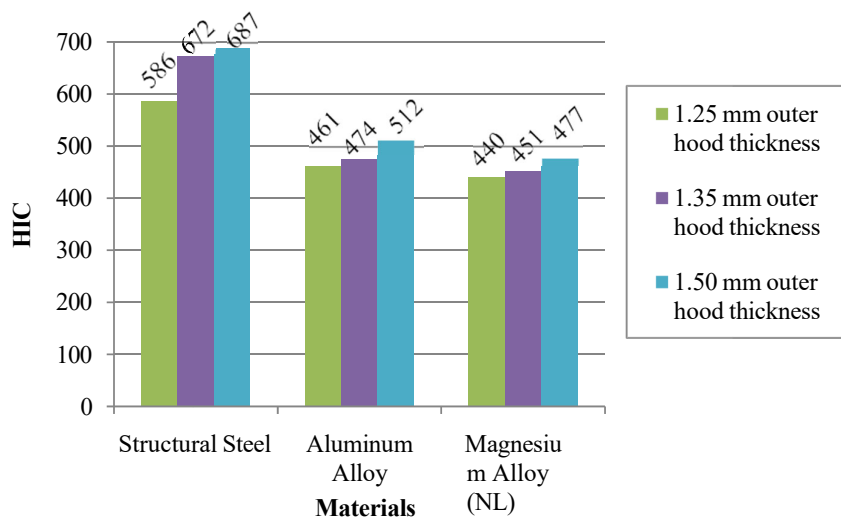


Figure 15. HIC values of the finite element modeling

From Figure 15, there are comparison of HIC value from all models. As it can be seen that outer hood panel of magnesium alloy (NL) with 1.25 mm thickness has lowest HIC value was 440. Meanwhile, it has highest deformation was 85.6 mm. Otherwise, structural steel (1.50 mm) has the highest HIC value was 687 and in contrast has minimum deformation was 51.5 mm. It is clear that the magnesium alloy is the lightest from all models. This means that magnesium alloy has the best crashworthiness regarding to its light weight. This result was in line with previous researchers, Torkestani et al. (2015) had found that increasing the thickness increases the HIC value for all the materials and it had the most effect on steel, carbon-epoxy, glass-epoxy and aluminum materials, respectively. However, it can be reported that the models achieves the basic requirements of the pedestrian safety where the HIC value should be less than 1000. In addition, all of hood models have under limit of HIC requirement, in this paper was not consider about inner structure of hood which can be important variable factor to affect HIC value.

Table 9. HIC and Deformation

Outer Hood Models	HIC	HIC Average	Deformation (mm)	Deformation Average (mm)	HIC (%)	Deformation (%)	Average (%)
SS (1.25 mm)	586		57.1				
SS (1.35 mm)	672	648.33	53.8	54.13	40.86	25.48	33.17
SS (1.50 mm)	687		51.5				
AA (1.25 mm)	461		76.9				
AA (1.35 mm)	474	482.33	74.6	74.70	30.40	35.16	32.78
AA (1.50 mm)	512		72.6				
MA (1.25 mm)	440		85.6				
MA (1.35 mm)	451	456.00	83.6	83.60	28.74	39.35	34.05
MA (1.50 mm)	477		81.6				

Note: SS (Structural Steel), AA (Aluminum Alloy), MA (Magnesium Alloy) NL

Along with the increase of deformation, in contrast HIC is reduced, as shown in Table 9. Generally, with the value increasing the hood deformation and energy absorption capability is increased, resulting in the reducing of HIC. It can be seen that there are slightly difference results of all models, where percentage average values for structural steel, aluminum alloy and magnesium alloy (NL) are 33.17%, 32.78% and 34.05% respectively. It mean that outer hood panel which made from aluminum alloy is the best selected from all. Therefore, it could be stated that aluminum alloy is required to meet pedestrian head injury requirement and acceptable distance when collision is occurring.

### CONCLUSIONS

The results show that the average of comparison dimensional of outer hood panel of Esemka R2 was 4.89 mm. Beside that the minimum deformation space is 51.5 mm and maximum HIC of 687. That values are required to obtain robust and homogeneous head impact performance. Moreover, hood thickness and materials are the factors which can influence stress and HIC value. It is shown that the pedestrian safety is greatly improved up to 32.78% for aluminium alloy model. As the requirements of the friendliest car, the structure of the engine hood should be soft to easy to form and to absorb more energy and also provide lower deformation, lower HIC and less displacement of the headform impactors. Thus, possible improvements in lower HIC and deformation could be studied, as well as materials, selection of engine hood structures should be considered in the future studies.

## ACKNOWLEDGEMENTS

The authors would like to thanks to **Prof. Bambang Setiaji** as Rector of Universitas Muhammadiyah Surakarta, **Prof. Dr. Khudzaifah Dimiyati** as the Director of Postgraduate Program, **Marwan Effendy, Ph.D.** as the Head of Master Program of Mechanical Engineering, **Tri Widodo Besar Riyadi, Ph.D.** as the Supervisor who has given the researcher inspiration, spirit, advices, suggestions, and corrections to the thesis completion. **Agus Dwi Anggono, Ph.D.** as the Co-supervisor who has given the researcher guidance, suggestions, and correction wisely. **All lectures** of Master Program of Mechanical Engineering for your advices. **Gatiningsih, SIP** as head of postgraduate library who has given the facilities regarding literatures needs. **Ir. Pramuko Ilmu Purboputro, M.T.** as head of Mechanical Engineering Laboratory for supporting facilities and apparatus. **SMK Warga Surakarta** especially for **Automotive Department** that had loaning Esemka R2 Car for supporting research. His beloved **Mother, poor Father, Brothers, Sisters**, wife “**Aniq Hadiyah Bil Haq**” and daughter “**Syakira Alifa Rasyadani**” who always give enormous pray, biggest support, care, affection and great love. His classmate friends “**Rahmadi, Wahyu, Puji, Amin Sulistyanto, Basuki Purwanto, Dhanar and Sanurya (Puput)**” thanks for your laugh, funnies experiences and supports, I will never forget you.

## REFERENCES

- Ahmed, A., & Wei, L. (2016). Thin-Walled Structures Introducing CFRP as an alternative material for engine hood to achieve better pedestrian safety using finite element modeling. *Thin Walled Structures*, 99, 97–108. <http://doi.org/10.1016/j.tws.2015.11.001>
- Anggono, A. D., Riyadi, T. W. B., & Siswanto, W. A. (2014). Dynamic Explicit Finite Element Code for U-Bending Simulation and Springback Prediction. *Applied Mechanics and Materials*, 660(August), 337–341. <http://doi.org/10.4028/www.scientific.net/AMM.660.337>
- Beer, F. P., Johnston, J. E., Mazurek, D. F., Cornwell, P. J., & Eisenberg, E. R. (2010). *Vector Mechanics for Engineers - Statics and Dynamics* (9th Edition). New York: The McGraw- Hill Companies, Inc.
- Cruz, PM; Vinyals, J., C. (2004). Validation of FE-models of pedestrian protection impactor. ABAQUS Users' Conference.
- Huang, J., Liu, Z., & Long, Y. (2014). A Numerical Investigation of a Novel Hood Design for Pedestrian Protection, 872–878.
- Krishnamoorthy, R., Takla, M., Subic, A., & Scott, D. (2013). Design Optimisation of Passenger Car Hood Panels for Improved Pedestrian Protection, 633, 62–76. <http://doi.org/10.4028/www.scientific.net/AMR.633.62>
- Marbun, J. (2014). Indonesia Urutan Pertama Peningkatan Kecelakaan Lalu Lintas. Retrieved February 3, 2016, from <http://www.republika.co.id>
- Masoumi, A., Hassan, M., & Najibi, A. (2011). Comparison of steel , aluminum and composite bonnet in terms of pedestrian head impact. *Safety Science*, 49(10), 1371–1380. <http://doi.org/10.1016/j.ssci.2011.05.008>
- Min, S., Kim, H., Chae, S.-W., & Hong, J. (2016). Design method of a hood structure adopting modal analysis for preventing pedestrian's head injury. *International Journal of Precision Engineering and Manufacturing*, 17(1), 19–26. <http://doi.org/10.1007/s12541-016-0003-2>
- Samaka, H. M., & Tarlochan, F. (2013). Building And Performance Validating Of Adult Pedestrian Finite Element Head Model To Evaluate The Car Hood Design, 2(7), 44–49.
- Shojaeefard, M. H., Najibi, A., & Ahmadabadi, M. R. (2014). Thin-Walled Structures Pedestrian safety investigation of the new inner structure of the hood to mitigate the impact injury of the head. *Thin Walled Structures*, 77, 77–85. <http://doi.org/10.1016/j.tws.2013.11.003>
- Torkestani, A., Sadighi, M., & Hedayati, R. (2015). Thin-Walled Structures Effect of material type, stacking sequence and impact location on the pedestrian head injury in collisions. *Thin Walled Structures*, 97, 130–139. <http://doi.org/10.1016/j.tws.2015.09.015>